

ISBN 0-67742-039-1



SENSIBLE
CRUISING
DESIGNS

Francis Herreshoff

SENSIBLE CRUISING DESIGNS

by L. Francis Herreshoff

INTERNATIONAL MARINE PUBLISHING COMPANY

Camden, Maine

DULCINEA

This able double-ender could perhaps be considered a stout ancestor of the *Rozinante*, for she was designed some years prior to the canoe yawl. Her easily driven hull should slip along well, and she would certainly stand up to her moderate rig in most kinds of weather. Her design suggests an ability to make extended cruises in unfrequented waters. With her snug rig, she also has the look of a good cold-weather cruiser.

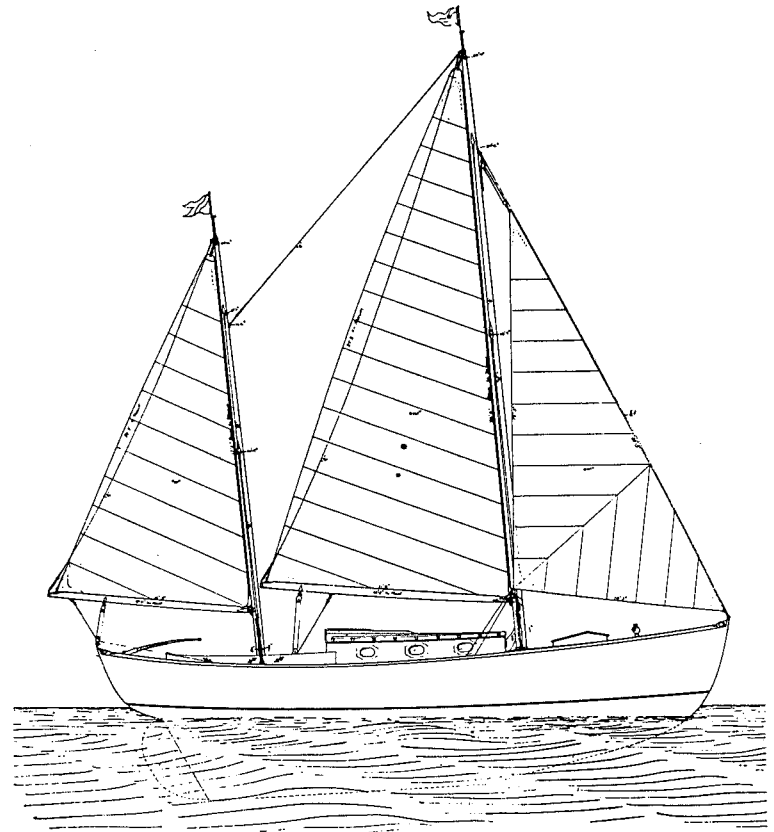
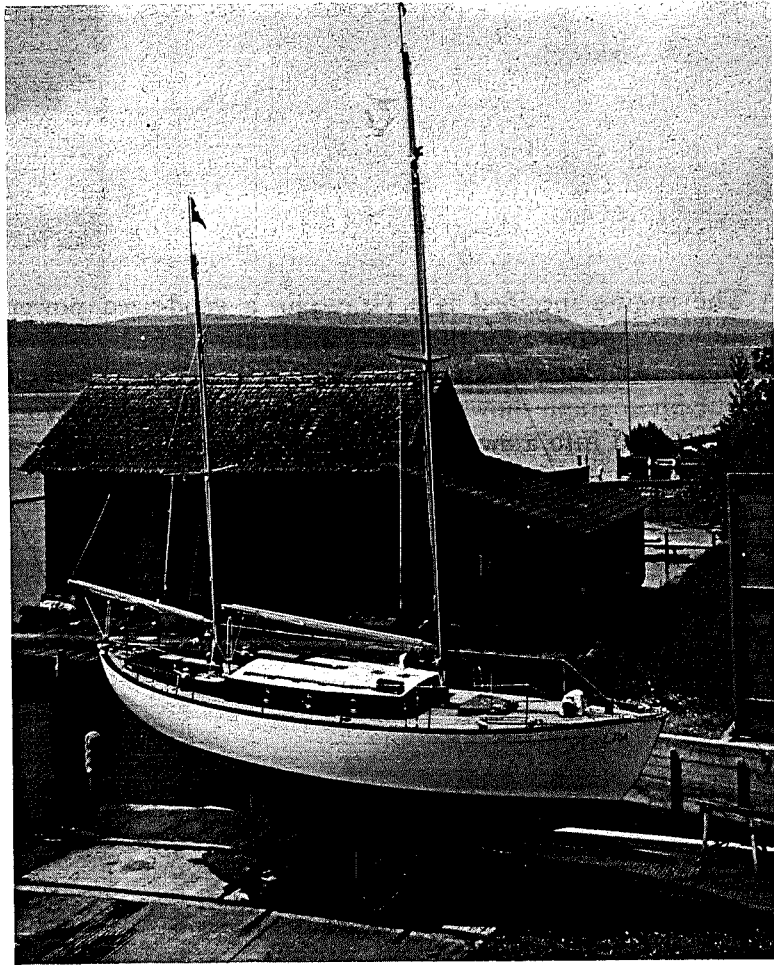
She has plenty of freeboard and a strong sheer. She would be quite "corky," and shouldn't take much solid water on deck. One can envision her picking her way nimbly through a heavy seaway.

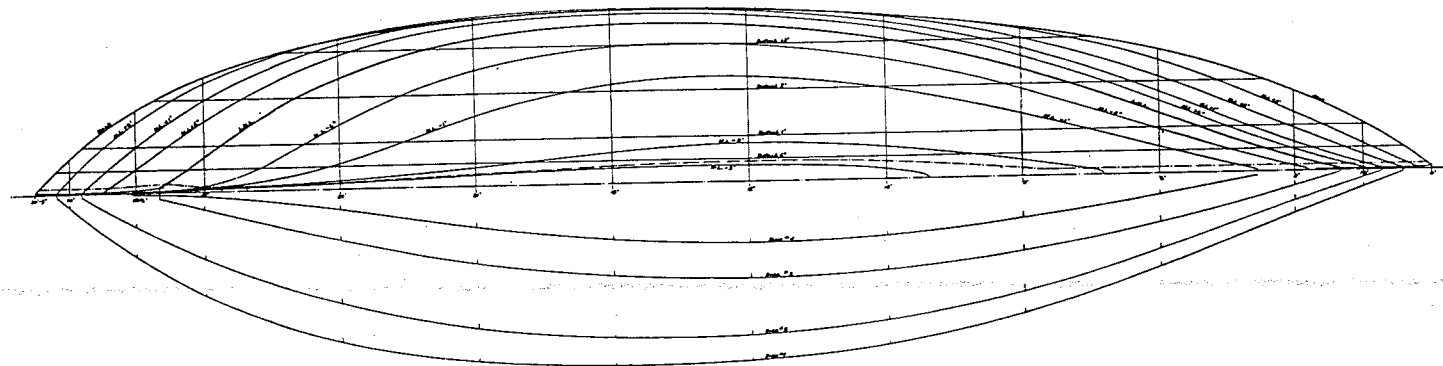
Since the purpose of the design is clearly safety and comfort, even in blowing weather, some might prefer a club on the jib to make it self-tending. Not that a jib of 97 square feet should cause too much trouble, but it's just the bother of having to shift the sheet over when tacking. Her mainsail has 143 square feet, and the mizzen, 81 square feet, for a total area of 321 square feet.

Below, the boat has four pipe berths, L. Francis' favorite kind of bed afloat. The galley is at the forward end of the house, and there is a small enclosed head.

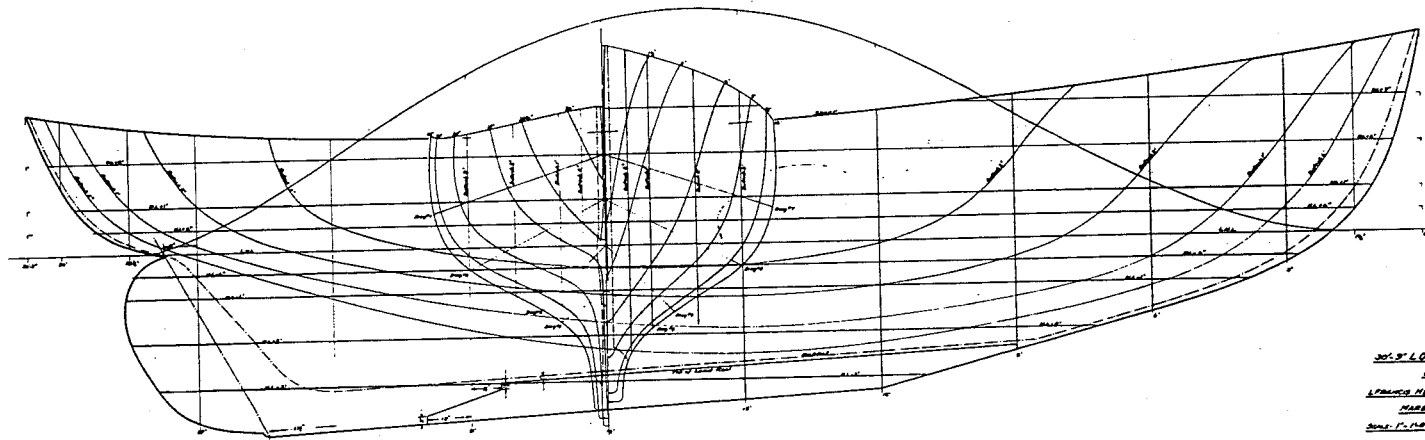
The engine specified is a Gray-430, a good-sized power plant to compensate for the boat's moderate rig in light airs, or shove her along in a calm.

The photograph shows a boat built to this design ready to go overboard into a Swiss lake. She was built in Zurich.





Dimensions
 L.O.A. _____ 30'-0"
 B.E.P. _____ 25'-0"
 B.M. _____ 7'-0"
 DRAUGHT _____ 4'-0"
 DEPTH _____ 1'-0"
 L.O.A. _____ 30'-0"



No. 55
 30'-0" L.O.A. AUXILIARY KETCH
 LINES
 SPENCER HERRINGTON, DESIGNER
 MARBLEHEAD, MASS.
 Done by J. C. P. APRIL 18, 1882

